

NORTH ELEVATION

© COPYRIGHT - These drawings remain the exclusive copyright of ADM Architects. Reproductions in any form whether electronic, digital or otherwise shall not be allowed except by express permission granted in writing by ADM Architects.  
 FIGURED DIMENSIONS - These drawings are not to be scaled. Figured dimensions shall be used in all cases.  
 DISCREPANCIES IN DIMENSIONS/POSITIONS/LOCATIONS/FINISHES - The Contractor is to verify any dimensional, location or finish discrepancy with ADM Architects prior to any physical construction or setting out so that ADM Architects is given the opportunity to resolve potential discrepancies or conflicts in sufficient time without causing abortive work. The Contractor shall be responsible for notifying ADM Architects of any such discrepancy or conflict that may arise on site.  
 CO-ORDINATION OF WORKS - These drawings are to be read in conjunction with the full set of consultant's drawings, specifications, reports and DA conditions.  
 NOMINATED ARCHITECT - The nominated Architect for ADM Projects (Australia) Pty Ltd T/AS ADM Architects is Angelo Di Martino ARB No.7608

ISSUE	DATE	DESCRIPTION
A	30.05.11	Issued for DA
B	20.09.11	amended for DA approval

NOT FOR CONSTRUCTION



94 Kembla St, Wollongong NSW 2500 PO Box 3061 Wollongong  
 ph: 02 4228 6400 fax: 02 4228 6455 www.admarchitects.com.au

Project  
 RESIDENTIAL DEVELOPMENT COMPRISING OF  
 15 X 2 BED UNITS, 17 X 3 BED UNITS &  
 2 X 3 BED PENTHOUSE UNITS WITH  
 7 VISITORS PARKING SPACES &  
 BASEMENT PARKING FOR 56 CARS

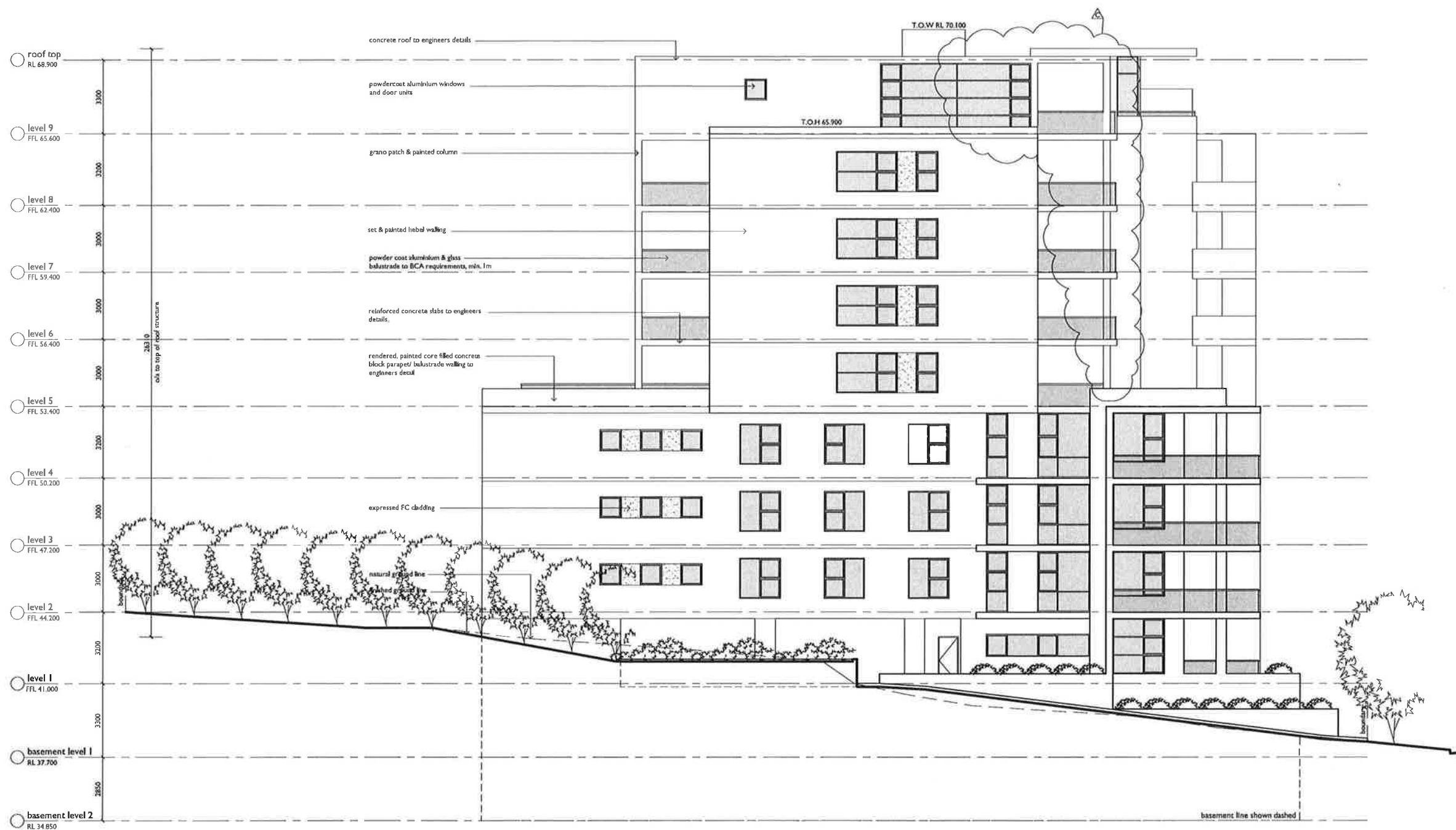
At  
 LOTS A & B D.P. 415263, LOT 2 D.P. 331687  
 No.32 & 34 CHURCH STREET  
 WOLLONGONG

For  
 PNA DEVELOPMENTS pty ltd

Title  
 DEVELOPMENT APPLICATION  
 NORTH ELEVATION

Scale 1:100@A1 1:200@A3	Date JUNE 2011	
Drawn djm	Checked ADM	
Project No. 2010-27	Drawing No. A-13	Issue B

copyright of adm architects



SOUTH ELEVATION

a COPYRIGHT - These drawings remain the exclusive copyright of ADM Architects. Reproductions in any form whether electronic, digital or otherwise shall not be allowed except by express permission granted in writing by ADM Architects.  
a FIGURED DIMENSIONS - These drawings are not to be scaled. Figured dimensions shall be used in all cases.  
a DISCREPANCIES IN DIMENSIONS/POSITIONS/LOCATIONS/FINISHES - The Contractor is to verify any dimensional, location or finish discrepancy with ADM Architects prior to any physical construction or setting out so that ADM Architects is given the opportunity to resolve potential discrepancies or conflicts in sufficient time without causing abortive work. The Contractor shall be responsible for notifying ADM Architects of any such discrepancy or conflict that may arise on site.  
a CO-ORDINATION OF WORKS - These drawings are to be read in conjunction with the full set of consultant's drawings, specifications, reports and DA conditions.  
a NOMINATED ARCHITECT - The nominated Architect for ADM Projects (Australia) Pty Ltd T/as ADM Architects is Angela Di Martino AMB No.7408

ISSUE	DATE	DESCRIPTION
A	30.05.11	Issued for DA
B	20.09.11	amended for DA approval
C	09.11.11	balconys amended

NOT FOR CONSTRUCTION



Project  
RESIDENTIAL DEVELOPMENT COMPRISING OF  
15 X 2 BED UNITS, 17 X 3 BED UNITS &  
2 X 3 BED PENTHOUSE UNITS WITH  
7 VISITORS PARKING SPACES &  
BASEMENT PARKING FOR 56 CARS

At  
LOTS A & B D.P 415263, LOT 2 D.P 331687  
No.32 & 34 CHURCH STREET  
WOLLONGONG

For  
PNA DEVELOPMENTS pty ltd

Title  
DEVELOPMENT APPLICATION  
SOUTH ELEVATION

Scale 1:100@A1 1:200@A3	Date JUNE 2011	
Drawn djm	Checked ADM	
Project No. 2010-27	Drawing No. A-15	Issue C

copyright of adm architects

© COPYRIGHT - These drawings remain the exclusive copyright of ADM Architects. Reproductions in any form whether electronic, digital or otherwise shall not be allowed except by express permission granted in writing by ADM Architects.

FIGURED DIMENSIONS - These drawings are not to be scaled. Figured dimensions shall be used in all cases.

DISCREPANCIES IN DIMENSIONS/POSITIONS/LOCATIONS/FINISHES - The Contractor is to verify any dimensional, location or finish discrepancy with ADM Architects prior to any physical construction or setting out so that ADM Architects is given the opportunity to resolve potential discrepancies or conflicts in sufficient time without causing abortive work. The Contractor shall be responsible for notifying ADM Architects of any such discrepancy or conflict that may arise on site.

CO-ORDINATION OF WORKS - These drawings are to be read in conjunction with the full set of consultant's drawings, specifications, reports and DA conditions.

NOMINATED ARCHITECT - The nominated Architect for ADM Projects (Australia) Pty Ltd T/A ADM Architects is Angelo Di Martino ARB No.7690

ISSUE	DATE	DESCRIPTION
A	30.05.11	Issued for DA
B	20.09.11	amended for DA approval
C	09.11.11	balconys amended

NOT FOR CONSTRUCTION



EAST ELEVATION  
VIEW FROM CHURCH STREET



94 Kembla St, Wollongong NSW 2500 PO Box 3061 Wollongong  
ph: 02 4228 6400 fax: 02 4228 6455 www.admarchitects.com.au

Project  
RESIDENTIAL DEVELOPMENT COMPRISING OF  
15 X 2 BED UNITS, 17 X 3 BED UNITS &  
2 X 3 BED PENTHOUSE UNITS WITH  
7 VISITORS PARKING SPACES &  
BASEMENT PARKING FOR 56 CARS

At  
LOTS A & B D.P 415263, LOT 2 D.P 331687  
No.32 & 34 CHURCH STREET  
WOLLONGONG

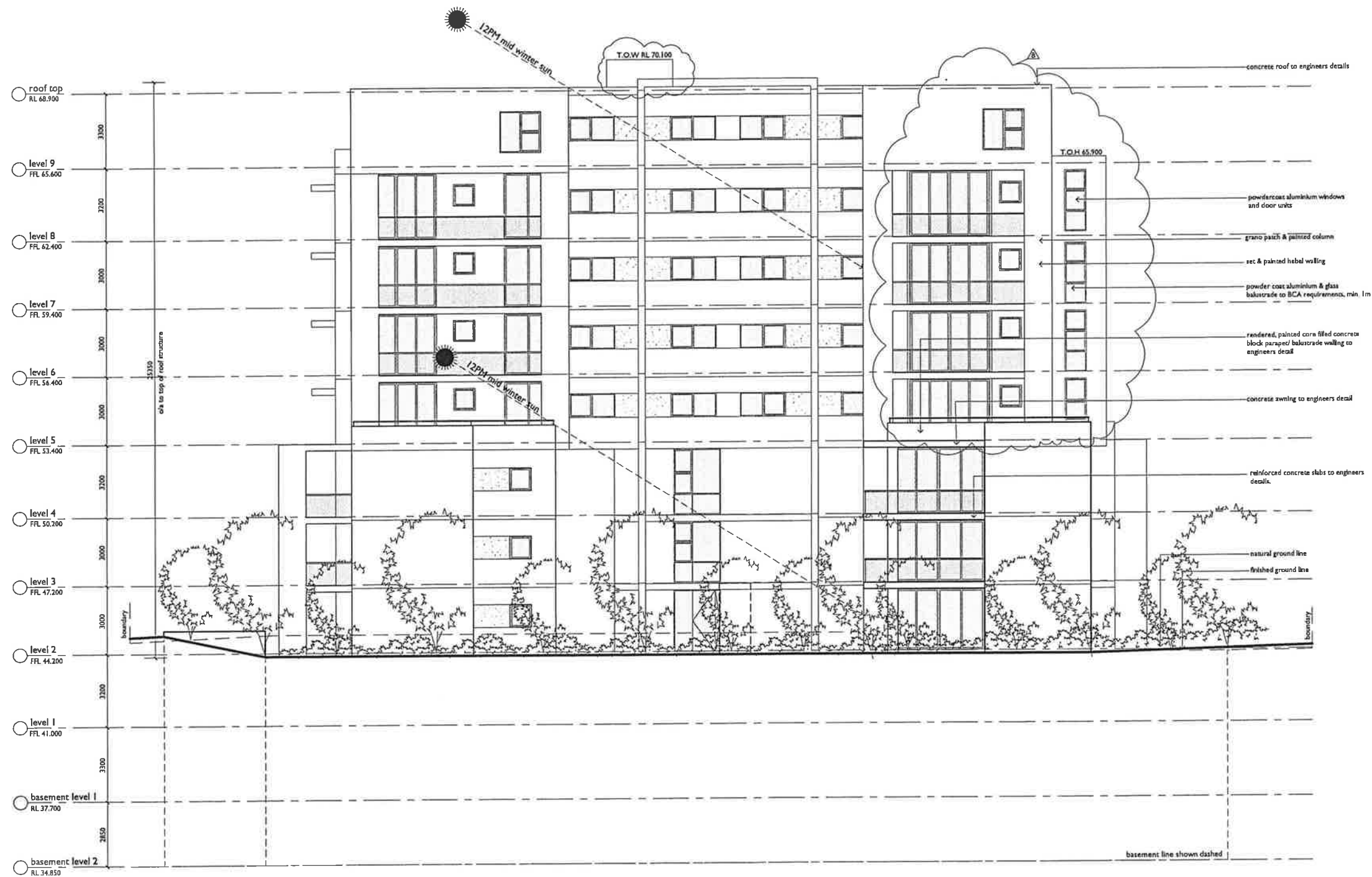
For  
**PNA DEVELOPMENTS pty ltd**

Title  
DEVELOPMENT APPLICATION  
EAST ELEVATION

Scale 1:100@A1 1:200@A3	Date JUNE 2011
Drawn djm	Checked ADM

Project No. 2010-27	Drawing No. A-12	Issue C
------------------------	---------------------	------------

copyright of adm architects



WEST ELEVATION

© COPYRIGHT - These drawings remain the exclusive copyright of ADM Architects. Reproductions in any form whether electronic, digital or otherwise shall not be allowed except by express permission granted in writing by ADM Architects.  
 a FIGURED DIMENSIONS - These drawings are not to be scaled. Figured dimensions shall be used in all cases.  
 a DISCREPANCIES IN DIMENSIONS/POSITIONS/LOCATIONS/FINISHES - The Contractor is to verify any dimensional, location or finish discrepancy with ADM Architects prior to any physical construction or setting out so that ADM Architects is given the opportunity to resolve potential discrepancies or conflicts in sufficient time without causing abortive work. The Contractor shall be responsible for notifying ADM Architects of any such discrepancy or conflict that may arise on site.  
 a CO-ORDINATION OF WORKS - These drawings are to be read in conjunction with the full set of consultant's drawings, specifications, reports and DA conditions.  
 a NOMINATED ARCHITECT - The nominated Architect for ADM Projects (Australia) Pty Ltd T/AS ADM Architects is Angelo Di Martino ARB No.7608

ISSUE	DATE	DESCRIPTION
A	30.05.11	issued for DA
B	20.09.11	amended for DA approval

NOT FOR CONSTRUCTION



94 Kembla St, Wollongong NSW 2500 PO Box 3061 Wollongong  
 ph: 02 4228 6400 fax: 02 4228 6455 www.admarchitects.com.au

Project  
 RESIDENTIAL DEVELOPMENT COMPRISING OF  
 15 X 2 BED UNITS, 17 X 3 BED UNITS &  
 2 X 3 BED PENTHOUSE UNITS WITH  
 7 VISITORS PARKING SPACES &  
 BASEMENT PARKING FOR 56 CARS

At  
 LOTS A & B D.P 415263, LOT 2 D.P 331687  
 No.32 & 34 CHURCH STREET  
 WOLLONGONG

For  
 PNA DEVELOPMENTS Pty Ltd

Title  
 DEVELOPMENT APPLICATION  
 WEST ELEVATION

Scale 1:100@A1 1:200@A3	Date JUNE 2011
-------------------------------	-------------------

Drawn djm	Checked ADM
--------------	----------------

Project No. 2010-27	Drawing No. A-14	Issue B
------------------------	---------------------	------------

copyright of adm architects